



MEADOWVIEW
Homes

BRACKENFIELD VIEW

Wessington
DE55 6NF

An *exclusive* development
of contemporary homes.



A PASSION FOR *quality* LIVING





IN BRIEF

Our exclusive development in Wessington, Derbyshire is the perfect setting for buyers wishing to settle in this village location surrounded by stunning Derbyshire countryside. Positioned between Alfreton, (4 miles) and Matlock (5 miles), Wessington is exceptionally well placed for commuters requiring access to major road networks, including the A38 (3 miles) and the M1 motorway (7 miles).

Sit on the doorstep of the Derbyshire Dales and Peak District National Park, Wessington is a great location for buyers wanting to explore countless outdoor activities amongst breathtaking scenery. The area is also home to some of the most impressive English country houses, including Chatsworth House, Hardwick Hall and Haddon Hall. Closer to home, Wessington offers all of the amenities that you might expect in a traditional village, including: schools, a fish and chip shop and the all important village pub!

Featuring both modern and traditional features, the charming new homes at Wessington sit perfectly against the backdrop of open countryside.

The Meadowview Approach

Behind our stunning contemporary designs you will find homes that are built to an exceptionally high specification. We use only the best quality materials and employ the latest construction technologies to ensure your new home is as efficient as it is beautiful.



BRACKENFIELD VIEW, WESSINGTON, ALFRETON DERBYSHIRE DE55 6NF



THE BELVOIR - 2 BED SEMI plots 16, 17, 20, 21, 22, 23, 24*, 25* 635 sq ft

Briefly comprising an entrance hall leading to the downstairs toilet and also leading into the living room. The living room leads to a great size kitchen and dining space. Upstairs doors off the landing lead to two good sized bedrooms and a contemporary family bathroom. There is parking to the side of the house and the gardens are landscaped to the front and rear of the property.

* Please note, plots 24 and 25 have a rendered exterior finish

THE BELVOIR - 2 BED SEMI

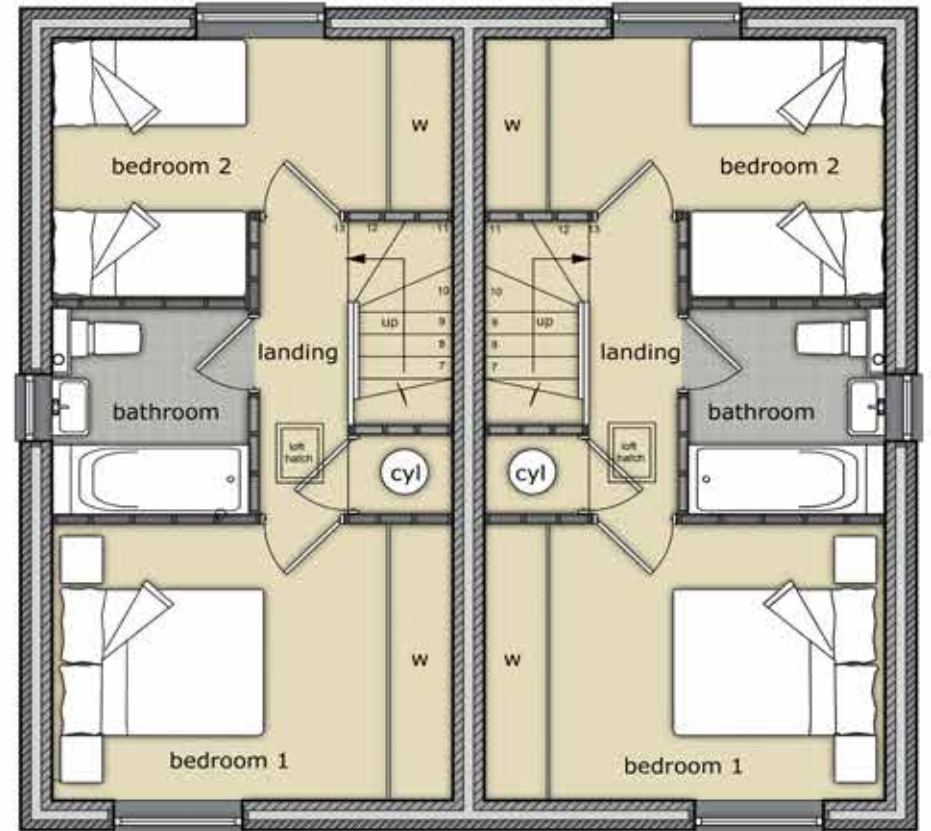
PLOTS 16, 17, 20, 21, 22, 23, 24, 25

GROUND FLOOR



GROUND FLOOR		
Kitchen/Dining	3.7m x 3.2m	12.4ft x 10.8ft
Living room	2.7m* x 4.2m	9.1ft x 14ft

FIRST FLOOR



FIRST FLOOR		
Bedroom 1	3.7m x 2.7m	12.4ft x 9.1ft
Bedroom 2	3.7m x 2.6m*	12.4ft x 8.5ft
Bathroom	2.0m x 1.9m	6.6ft x 6.2ft
* at widest point		
TOTAL AREA:	59 sq m	635 sq ft



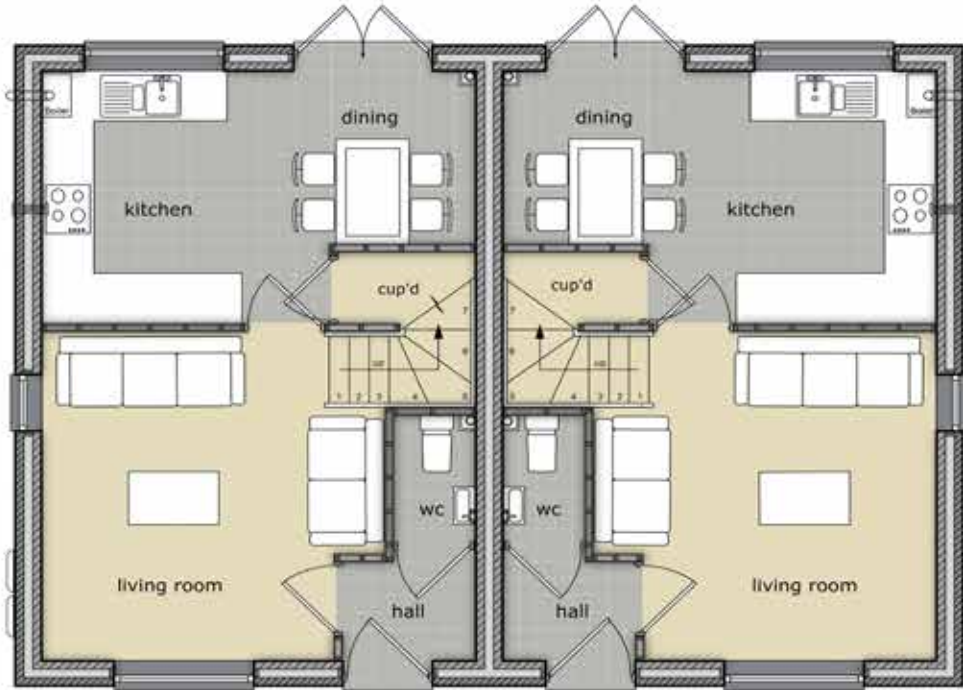
THE HAREWOOD - 3 BED SEMI plots 14, 15, 18, 19 731 sq ft

Briefly comprising an entrance hall leading to the downstairs toilet and also leading into the living room. The living room leads to a great size kitchen and dining space. Upstairs doors off the landing lead to three good sized bedrooms and a contemporary family bathroom. Parking to the side of the house and the gardens are landscaped to the front and rear of the property.

THE HAREWOOD - 3 BED SEMI

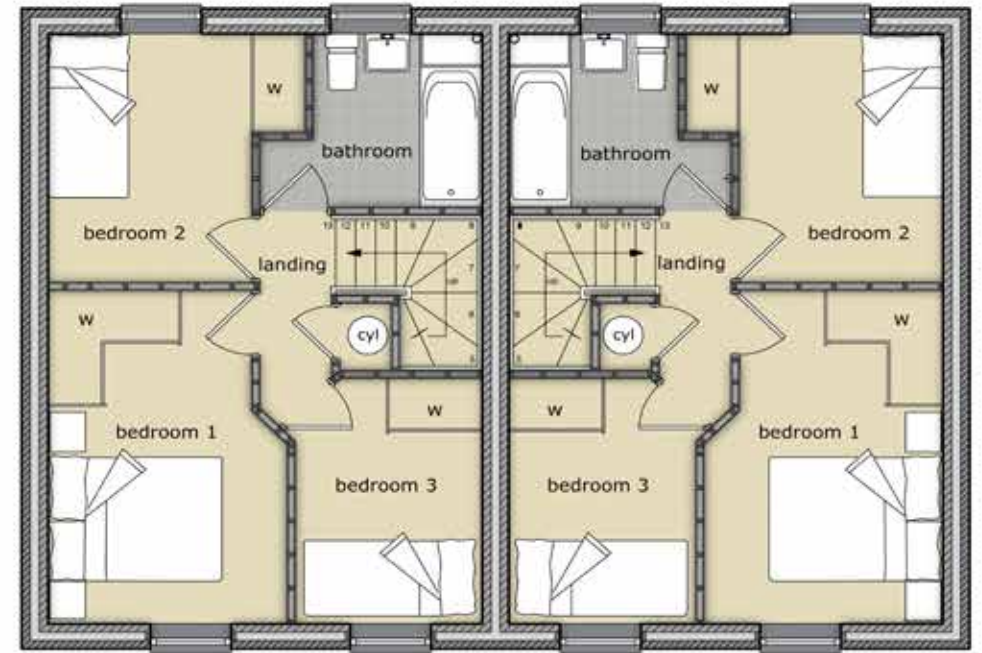
PLOTS 14, 15, 18, 19

GROUND FLOOR



GROUND FLOOR		
Kitchen/Dining	4.8m x 3.0m	15.8ft x 10ft
Living room	3.8m x 3.8m	12.5ft x 12.5ft

FIRST FLOOR



FIRST FLOOR		
Bedroom 1	2.6m* x 3.9m	8.7ft x 12.9ft
Bedroom 2	2.8m* x 2.9m	9.3ft x 9.6ft
Bedroom 3	2m x 2.8m	6.8ft x 9.3ft
Bathroom	2.5m x 2.0m	8.2ft x 6.6ft
* at widest point		
TOTAL AREA:	68 sq m	731 sq ft



MEADOWVIEW

Homes

Meadowview Homes, Oaklands, 103 Duffield Road, Derby, DE22 1AE
www.meadowviewhomes.co.uk
Head Office 01332 460 144
Site Office 01773 417 474

